

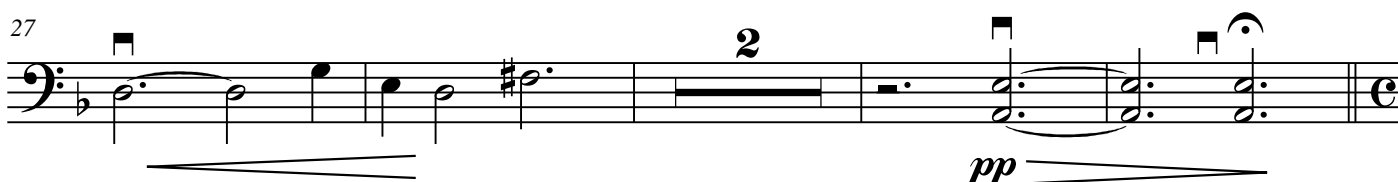
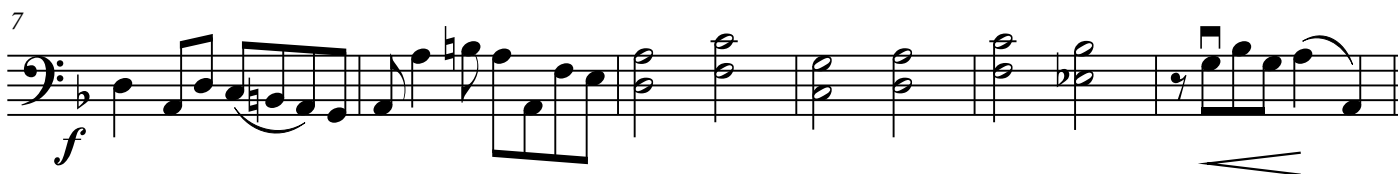
violoncello

# Exsulta, filia Sion

[cori per רות]

Gianmartino Maria Durighello

**A** con gioia e brio ♩ = 88ca



43 F *mp* pizz. arco G

49 *Adagio* divisi

The image shows two staves of musical notation. The first staff, starting at measure 43, is in bass clef with a key signature of one flat (B-flat). It begins with a piano marking of *mp*. The first measure contains a half note F, marked with a box labeled 'F'. This is followed by a series of eighth and sixteenth notes, some marked 'pizz.' (pizzicato) and others 'arco' (arco). A box labeled 'G' appears above a half note in measure 47. The staff ends with a double bar line. The second staff, starting at measure 49, is also in bass clef with a key signature of one flat. It begins with a tempo marking of *Adagio*. The first measure contains a half note F, followed by eighth and sixteenth notes. A measure rest is indicated by a 'V' symbol. The staff then changes to a 3/2 time signature and continues with half notes. The word 'divisi' is written above the staff. The staff ends with a double bar line.